

ITEM 45. CAR SHARE – WOLSELEY GROVE ZETLAND

TRIM RECORD NO: 2016/289262

RECOMMENDATION

It is recommended that the Committee endorse the reallocation of parking on the southern side of Wolseley Grove, Zetland between the points 12.4 metres and 17.4 metres (one car space) east of Joynton Avenue as 'No Parking Car Share Vehicles Excepted' subject to the following:-

- (A) The City will only install signage for the car share space when GoGet has a car to occupy the space.

VOTING MEMBERS FOR THIS ITEM

<i>Voting Members</i>	<i>Support</i>	<i>Object</i>
City of Sydney		
Roads and Maritime Services		
NSW Police –Redfern LAC		
Representative for the Member for Heffron		

DECISION

BACKGROUND

The City is committed to providing dedicated parking for car sharing across the Local Government Area as part of a Council approved Car Share Policy. A submission has been received from GoGet for a car share space in Wolseley Grove, Zetland, east of Joynton Avenue.

COMMENTS

The kerb space on the southern side of Wolseley Grove, Zetland between Joynton Avenue and Grandstand Parade is currently signposted as “4P 8am-6pm Mon-Fri”.

The car share space will be installed and managed in accordance with the Roads and Maritime Service’s Technical Direction 2007/04 and the provisions of the Council-approved Car Share Policy.

Car sharing is popular in more than 600 cities worldwide, and research has shown substantial environmental benefits. Car sharing reduces total urban driving, reduces household vehicle holdings, and increases walking, cycling and public transport use.

Current membership is approximately 29,084, of which 8,356 are business members.

As of May 2016, there were 179 GoGet car share members within a 250 metre radius of this location with 10 members in Wolseley Grove, 31 members in Joynton Avenue, and 18 members in O’Dea Avenue.

Within a 250 metre radius of this location, there are currently five spaces allocated for GoGet car share vehicles.

CONSULTATION

The City consulted local residents and businesses in the area. There were 446 letters sent out with one response supporting the proposal and one response opposing the proposal due to the loss of parking and that the number of spaces already dedicated to car sharing in the local area is sufficient.

The adjacent properties are apartment buildings with off-street parking. The residents supporting the proposal are car share members and support the scheme being extended to provide an alternative to private car ownership and reducing the number of cars around the City.

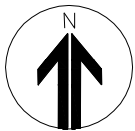
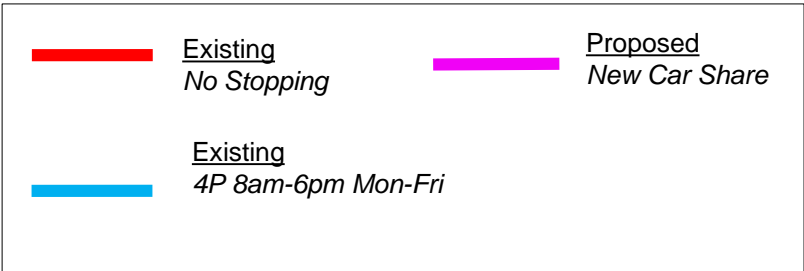
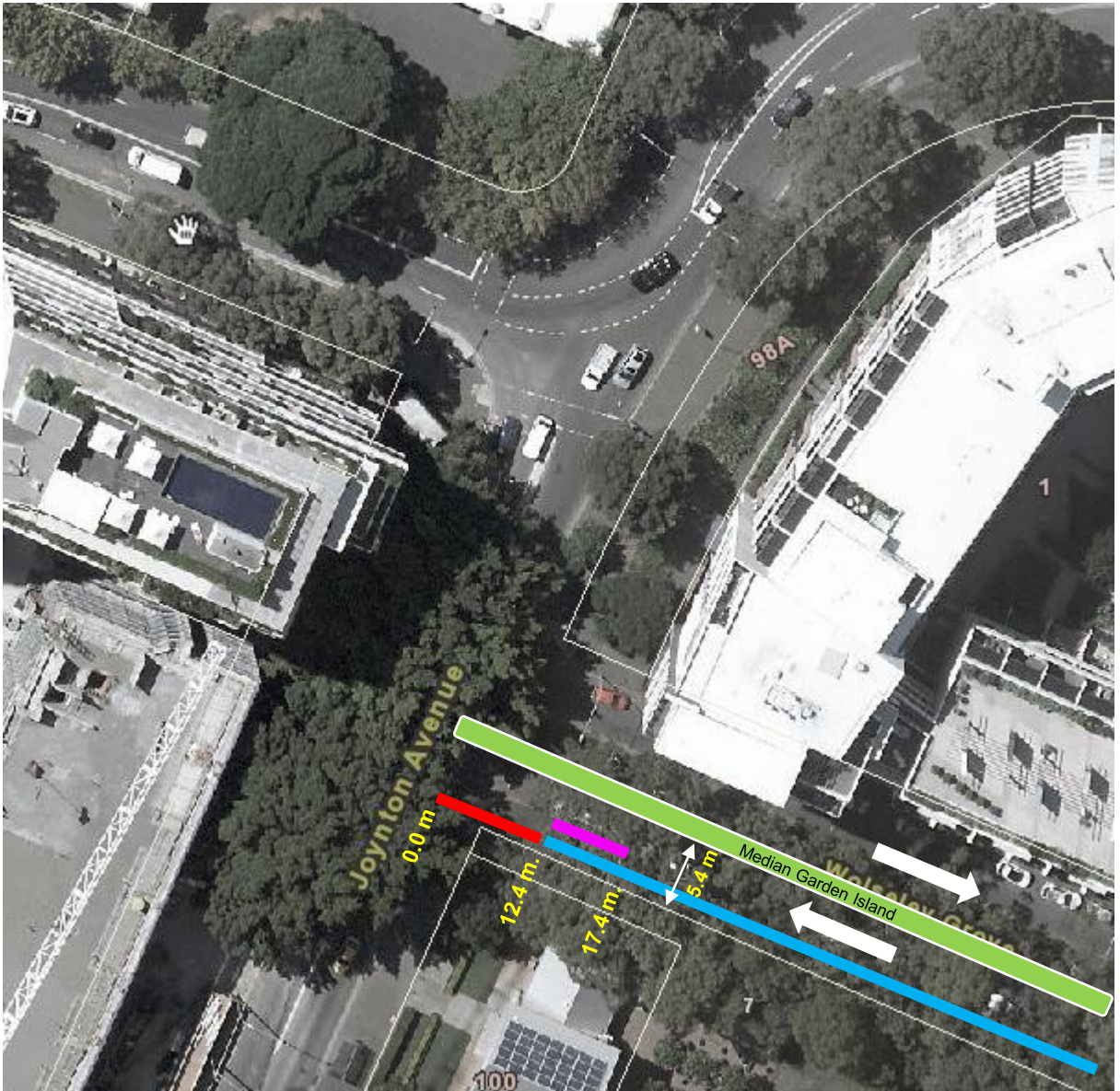
FINANCIAL

Funds are available in the current budget.

ATTACHMENTS

Car Share – Wolseley Grove, Zetland

Claudia Calabro, Business Support Officer



PROPOSAL

WOLSELEY GROVE ZETLAND
PROPOSED CAR SHARE



